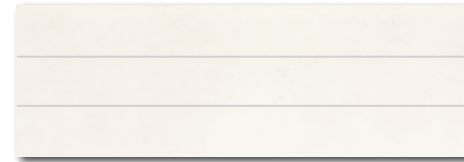




20x60



WADVE200
○ 80 / m²
mat | matt | **V2**



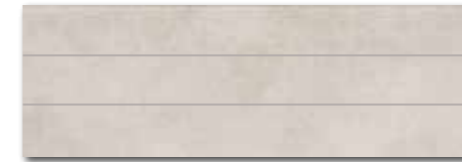
WIFVE200
○ 58 / ks
mat | matt | **V2**



WADVE210
○ 86 / m²
mat | matt | **V3**
bílá / white / biata / белый / fehér



WADVE201
○ 80 / m²
mat | matt | **V2**



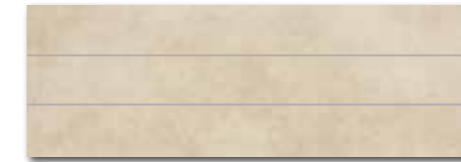
WIFVE201
○ 58 / ks
mat | matt | **V2**



WADVE211
○ 86 / m²
mat | matt | **V3**
šedá / grey / szara / серый / szürke



WADVE202
○ 80 / m²
mat | matt | **V2**



WIFVE202
○ 58 / ks
mat | matt | **V2**



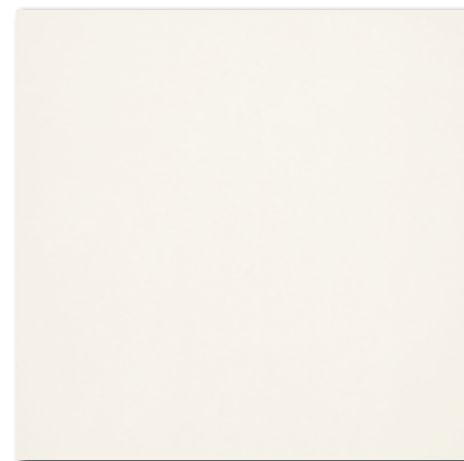
WADVE212
○ 86 / m²
mat | matt | **V3**
béžová / beige / bežowa / бежевый / bézs



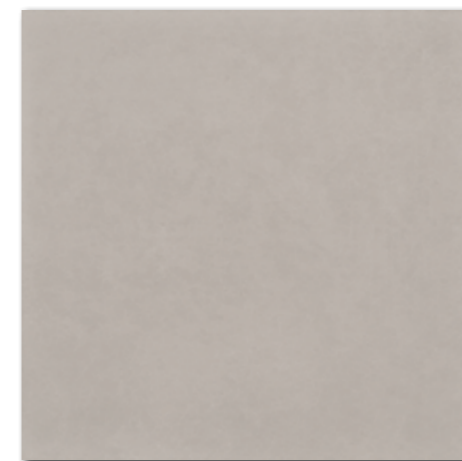
WLASN002
○ 58 / ks
mat | matt
žluto-zelená / yellow-green / zolto-zielony
жело-зеленый / sarga-zold



WLASN001
○ 58 / ks
mat | matt
oranžovo-hnědá / orange-brown / pomarańczowo-brązowy
оранжево-коричневого / narancs-barna



DAK63652
Trend
PEI 5 ○ 82 / m²
mat | matt
slonová kost / ivory / kość słoniowa / слонобая кость
elefántcsont



DAK63654
Trend
PEI 5 ○ 82 / m²
mat | matt
šedá / grey / szara / серый / szürke



DAK63658
Trend
PEI 5 ○ 82 / m²
mat | matt
světle béžová / light beige
jasnobežowa / светло-бежевый / világosbezs

60x2,5



60x60



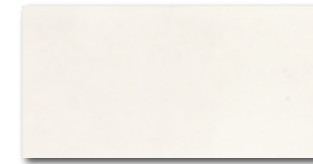
R9



V2



výrobek / product	cm	mm	EN	ks/m ²	m ²	m ²	kg	kg/m ²	brutto kg		
obkládačka / wall tile	20x60	198x598x10	EN 14411:2012, annex K BIII GL	9	8,3	1,08	42	45,36	20,0	18,5	865
inzerťo / insert (WIFVE...)	20x60	198x598x10	EN 14411:2012, annex K BIII GL	4	8,3	0,48	-	-	8,9	18,5	-
listela / listel	60x2,5	598x25x10	EN 14411:2012, annex K BIII GL	6	66,7	0,09	-	-	1,7	18,5	-
dlaždice / floor tile	60x60	598x598x10	EN 14411:2012, annex G BIa GL	3	2,8	1,08	32	34,56	24,9	23,0	820



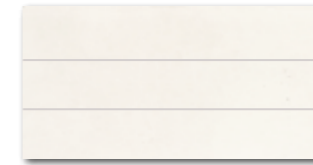
WADMB200
○ 72 / m²
mat | matt | ❄️



WADMB201
○ 72 / m²
mat | matt | ❄️

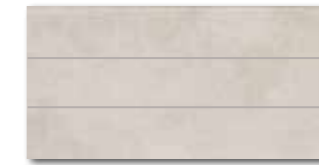


WADMB202
○ 72 / m²
mat | matt | ❄️

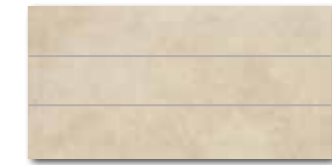


WIFMB200
○ 52 / ks
mat | matt | ❄️

bílá / white / biata / белый / fehér



WIFMB201
○ 52 / ks
mat | matt | ❄️



WIFMB202
○ 52 / ks
mat | matt | ❄️



WITMB048
○ 58 / ks
mat | matt



WITMB049
○ 58 / ks
mat | matt



WLAMH048 (SET)
○ 58 / set
mat | matt



WLAMH049 (SET)
○ 58 / set
mat | matt

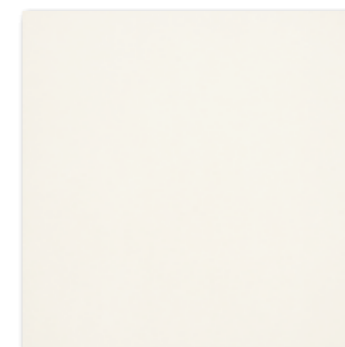


WLRMG048
○ 50 / ks
mat | matt



WLRMG049
○ 50 / ks
mat | matt

běžová / beige / beżowa / бежевый / bézs



DAK44652
Trend
PEI 5 ○ 74 / m²
mat | matt

slonová kost / ivory / kość stoniowa
слоновая кость / elefántcsont



DAK44654
Trend
PEI 5 ○ 74 / m²
mat | matt

šedá / grey / szara / серый / szürke



DAK44658
Trend
PEI 5 ○ 74 / m²
mat | matt

světle běžová / light beige
jasnobeżowa / светло-бежевый / világosbezs

40x4,5

40x2

45x45



výrobek / product	cm	mm	EN	ks/m ²	m ²	m ²	m ²	kg	kg/m ²	brutto kg	
obkládačka / wall tile	20x40	198x398x7	EN 14411:2012, annex K BIII GL	20	12,5	1,60	48	76,80	20,6	12,9	1 016
inerto / insert	20x40	198x398x7	EN 14411:2012, annex K BIII GL	4	12,5	0,32	-	-	4,1	12,9	-
listela / listel (set)	40x4,5	398x45x7	EN 14411:2012, annex K BIII GL	6	113,6	0,22	-	-	2,8	12,9	-
listela / listel	40x2	398x20x7	EN 14411:2012, annex K BIII GL	12	125	0,10	-	-	1,2	12,9	-
dlaždice / floor tile	45x45	445x445x10	EN 14411:2012, annex G BIIa GL	6	5	1,21	26	31,46	25,0	20,7	677